



LANITZ
AVIATION

**NEW DESIGN-CHANGE-STC FOR
SCHLEICHER GLIDERS!**

From now on every Schleicher Glider which is listed on
the new STC is allowed to get covered with

ORATEX® UL 600 or ORATEX® 6000!
NO LACING NEEDED ANYMORE!

Find more information and
the STC on: www.lanitz-aviation.com.

Products for General Aviation

ORATEX® UL 600
ORATEX® 6000

Aircraft covering and Decal Systems for your Airplane

ORACOLOR® ORATRIM® ORALINE® EASYPLOT®

certified by



and many more...



A DIVISION OF
LANITZ-PRENA FOLIEN FACTORY GmbH

Am Ritterschlösschen 20
04179 Leipzig

Fon: +49 341/442305-0
Fax +49 341/442305-99

E-Mail: info@lanitz-aviation.com
Onlineshop: www.lanitz-aviation.com

ORATEX® UL 600 & 6000 - THE COVERING INNOVATION!

Incredible advantages over conventional covering products:

- Can be over painted with **ORACOLOR®** for a long-lasting and crack-free finish.
- Airworthy straight from the roll: It needs no paints, dope, coatings or sealants.
- Resistant against UV and ageing, easy of testing for Continued Airworthiness.
- Up to 50% weight saving in comparison to conventional covering products.
- Extremely durable against mechanical impact and UV resistant.
- Fire resistant in accordance with DIN EN ISO 6941.
- Completely solvent free work environment.
- Cuts aircraft covering time in half.
- Can also be heat vacuum-formed.
- Can be re-shrunk repeatedly!
- Cost reduction about 50%.
- Easy „in the field“ repairs.
- Worldwide patent.



✗ no dope ✗ no painting ✗ no sanding ✗ no time-wasting ✗ no harmful chemical exposure



ORATEX® UL 600 MK3 MTOW max. 600 Kg

Material: Polyester fabric (plain weave) with colour coating
 Weight of the uncoated fabric: 55 - 65 g/m²
 Weight of the coated fabric: 92 - 122 g/m² (dependent on colour)
 Tensile strength lengthwise: 750 - 1050 N / 50 mm
 Tensile strength crosswise: 650 - 950 N / 50 mm
 Breaking extension lengthwise: 10 - 18 %
 Breaking extension crosswise: 11 - 20 %
 Tear propagation load lengthwise: 18 - 24 N
 Tear propagation load crosswise: 16 - 22 N
 Burst strength: 500 - 700 kPa
 Burst elevation: 14 - 18 mm
 Air permeability: Airtight (0,0 mm/s)
 Shrinkage lengthwise: 8 - 12 %
 Shrinkage crosswise: 8 - 12 %
 Inflammability: not flammable
 Melting Point: 250 °C

width	900 mm	1800 mm
colour	ref. no.	ref. no.
natural white	13-000-090	13-000-180
white	13-010-090	13-010-180
antique	13-012-090	13-012-180
olive drab	13-018-090	13-018-180
corsair blue	13-019-090	13-019-180
fokkerred	13-020-090	13-020-180
cub yellow	13-030-090	13-030-180
sky blue	13-053-090	13-053-180
orange	13-060-090	13-060-180
black	13-071-090	13-071-180
silver	13-091-090	13-091-180

NEW

ORATEX® 6000 MTOW max. 6000 Kg

Material: Polyester fabric (plain weave) with colour coating
 Weight of the uncoated fabric: 95 - 105 g/m²
 Weight of the coated fabric: 140 - 160 g/m² (dependent on colour)
 Tensile strength lengthwise: 1300 - 1600 N / 50 mm
 Tensile strength crosswise: 1100 - 1400 N / 50 mm
 Breaking extension lengthwise: 12 - 20 %
 Breaking extension crosswise: 12 - 20 %
 Tear propagation load lengthwise: 26 - 32 N
 Tear propagation load crosswise: 28 - 34 N
 Burst strength: > 1000 kPa
 Burst elevation: > 15 mm
 Air permeability: Airtight (0,0 mm/s)
 Shrinkage lengthwise: 9 - 13 %
 Shrinkage crosswise: 8 - 12 %
 Inflammability: not flammable
 Melting Point: 250 °C

width	900 mm	1800 mm
colour	ref. no.	ref. no.
white	14-010-090	14-010-180
olive drab	14-018-090	14-018-180
corsair blue	14-019-090	14-019-180
fokkerred	14-020-090	14-020-180
cub yellow	14-030-090	14-030-180
sky blue	14-053-090	14-053-180
orange	14-060-090	14-060-180
black	14-071-090	14-071-180
silver	14-091-090	14-091-180

NEW

New **ORATEX®** fabric colours, orange (060) and black (071), are expected to be available in the second half of 2017.

ORATEX® FELT BLADE

- invaluable for application and forming the material while the glue is activated with heat / for improved quality of workmanship
- ensures smooth fabric application eliminating creases and trapped air
- an essential tool for a perfect covering job

product	size / cm	ref. no.
Felt blade - small	7 x 10	0915
Felt blade - large	10 x 14	0948



NECESSARY ACCESSORY

ORATEX® 6000 RIB-BRACING TAPE

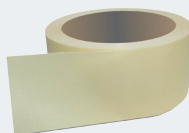
Used in traditional aircraft construction to keep the ribs from distorting and twisting during the covering and under the flight loads over the lifespan of the airplane.



ORATEX® RIB-BRACING TAPE	
width: 25 mm, length: 10 m	
white	17-010-025-010
olive drab	17-018-025-010
corair blue	17-019-025-010
fokkerred	17-020-025-010
cub yellow	17-030-025-010
sky blue	17-053-025-010
orange	17-060-025-010
black	17-071-025-010
silver	17-091-025-010

ORATEX® 6000

Reinforcing tapes used when rib stitching.



NEW

fusible

ORATEX® REINFORCING TAPE	
width: 10-25 mm, length: 25 m	
white	19-010-A
olive drab	19-018-A
corair blue	19-019-A
fokkerred	19-020-A
cub yellow	19-030-A
sky blue	19-053-A
orange	19-060-A
black	19-071-A
silver	19-091-A

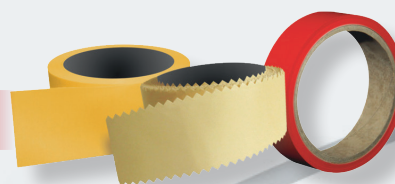
NEW

ORATEX® STRAIGHT EDGE TAPE, length: 25 m						
width	10-25 mm	26-35 mm	36-50 mm	51-75 mm	76-100 mm	101-125 mm
natural white	16-000-A	16-000-B	16-000-C	16-000-D	16-000-E	16-000-F
white	16-010-A	16-010-B	16-010-C	16-010-D	16-010-E	16-010-F
antique	16-012-A	16-012-B	16-012-C	16-012-D	16-012-E	16-012-F
olive drab	16-018-A	16-018-B	16-018-C	16-018-D	16-018-E	16-018-F
corair blue	16-019-A	16-019-B	16-019-C	16-019-D	16-019-E	16-019-F
fokkerred	16-020-A	16-020-B	16-020-C	16-020-D	16-020-E	16-020-F
cub yellow	16-030-A	16-030-B	16-030-C	16-030-D	16-030-E	16-030-F
sky blue	16-053-A	16-053-B	16-053-C	16-053-D	16-053-E	16-053-F
orange	16-060-A	16-060-B	16-060-C	16-060-D	16-060-E	16-060-F
black	16-071-A	16-071-B	16-071-C	16-071-D	16-071-E	16-071-F
silver	16-091-A	16-091-B	16-091-C	16-091-D	16-091-E	16-091-F

ORATEX® PINK EDGE TAPE, length: 25 m						
width	25 mm	50 mm	75 mm	100 mm	125 mm	150 mm
natural white	15-000-025	15-000-050	15-000-075	15-000-100	15-000-125	15-000-150
white	15-010-025	15-010-050	15-010-075	15-010-100	15-010-125	15-010-150
antique	15-012-025	15-012-050	15-012-075	15-012-100	15-012-125	15-012-150
olive drab	15-018-025	15-018-050	15-018-075	15-018-100	15-018-125	15-018-150
corair blue	15-019-025	15-019-050	15-019-075	15-019-100	15-019-125	15-019-150
fokkerred	15-020-025	15-020-050	15-020-075	15-020-100	15-020-125	15-020-150
cub yellow	15-030-025	15-030-050	15-030-075	15-030-100	15-030-125	15-030-150
sky blue	15-053-025	15-053-050	15-053-075	15-053-100	15-053-125	15-053-150
orange	15-060-025	15-060-050	15-060-075	15-060-100	15-060-125	15-060-150
black	15-071-025	15-071-050	15-071-075	15-071-100	15-071-125	15-071-150
silver	15-091-025	15-091-050	15-091-075	15-091-100	15-091-125	15-091-150

NEW

ORATEX® UL 600 EDGE TAPE PINKED & STRAIGHT



fusible

For protecting structural joints, seams, covering rib-stitching, fasteners and doublers at exposed edges. Available in all of our **ORATEX®** colours, adhesive pre applied and ready to be ironed-on.

NEW

ORATEX® UL 600 SELF-ADHESIVE

REPAIR-SHEET A4:

A4 sheets to quickly repair small damages at your airplane covering.

Cut to size, - peel of backing paper, stick it on and rub it down: **DONE!**

ORATEX®

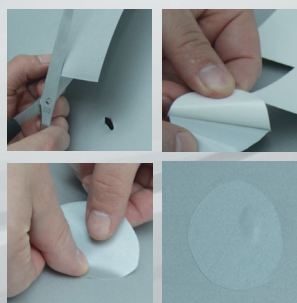
DISPERSION-HOTMELT-2K-ADHESIVE

The **ORATEX®** DISPERSION HOTMELT ADHESIVE is a revolutionary waterbased product with a worldwide patent. It has no unpleasant odours associated with conventional covering products. It is applied to both the airframe and to the areas of the fabric which are to be bonded to the airframe. For application always use our "Special Brush for **ORATEX®** Dispersion Hotmelt Adhesive" (ref. no.: 08424 / 08425 / 08426). When the adhesive has dried you can iron the covering onto the airframe.

At outside temperatures of less than +5 °C **ORATEX®** DISPERSION HOTMELT ADHESIVE can just be sent in special thermo boxes.

The current prices are available on request.

- waterbased adhesive
- easy to apply with our Special Brush
- no solvent smell or exposure to harmful chemicals whatsoever



colour	ref. no.
natural white	18-000-A4
white	18-010-A4
antique	18-012-A4
olive drab	18-018-A4
corair blue	18-019-A4
fokkerred	18-020-A4
cub yellow	18-030-A4
sky blue	18-053-A4
orange	18-060-A4
black	18-071-A4
silver	18-091-A4

NEW



quantity	ref. no.
50 ml	0974
100 ml	0975
500 ml	0976
1 litre	0977
5 litres	0978
10 litres	0979

What do I have to do to cover my aircraft with **ORATEX®**?

There are two possibilities:

Case I:

Very simple: Your aircraft is part of our Approved Model List, which is always increasing.

- » Apply for an EO (Engineering Order) by filling out our Request Form and send it to info@lanitz-aviation.com. It takes approx. 24h to process and return the EO to you.

This Engineering Order covers the "Approved Data" for the aircraft. With this EO the aircraft can be legally covered in accordance with the official covering manual. The installation of the covering and final approval is issued by your Maintenance Organisation.

If your aircraft is controlled by a CAMO, you are allowed to cover it on your own or you bring it to one of our workshops and learn under qualified supervision how to cover your aircraft with **ORATEX®**.

To join one of our workshops you need a confirmation that your aircraft is approved by YOUR CAMO Inspector in advance and released for covering, because after covering the Inspector can not check the inner parts.

The workshops run for 5 days after which your aircraft is nearly finished, you just have to do a few remaining finishing tasks. Your Inspector will issue you with your Release to Service.

Case II:

Also very simple, but takes a little longer: Your aircraft ISN'T on our Approved Model List.

- » In this case you have to apply an EO (Engineering Order) by filling out our Request Form and send it to info@lanitz-aviation.com. In this case you'll get an EO for "NON-Approved Data".

The covering process continues just like in Case I. But unlike in Case I you need a PTF (Permit To Fly) and our EASA development company will undertake the test flight.

After that the holder either as an individual or a club as PIC (club pilots) with the PTF can fly the aircraft, meanwhile the Approved Model List will be expanded with your aircraft type and after that an EO for "Approved Data" will be issued covering your aircraft.

With the "Approved Data" EO and the release through the Maintenance Organisation (MO) or your Inspector can return the PTF and you will be issued a "Release to Service".

For Case II the period of time until the final release will take up to 6 weeks and will cost you NOTHING.

WORKSHOPS

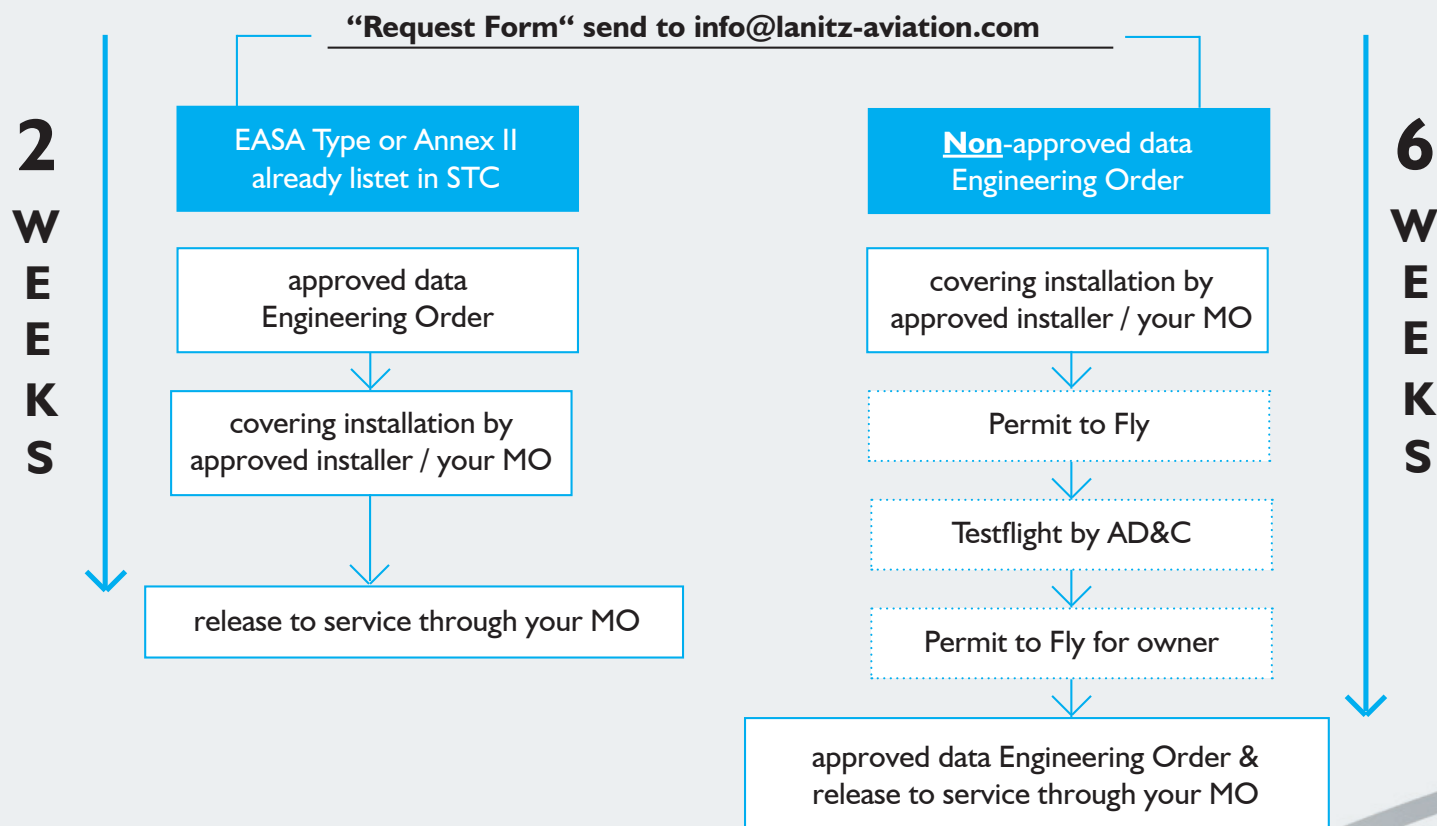
...how to get a professional with **ORATEX®**!



Find our workshop dates on: www.lanitz-aviation.com

Information and application: info@lanitz-aviation.com

Fon.: +49-341 - 44 23 05 - 0



INFO FOR

- MICROLIGHT:**

The covering of microlights with **ORATEX®** is very simple. Fill out the Application Form for Microlights on our website and create a balance report. Don't forget to send it! "Because without papers no aircraft flies - also no microlight!"

- EXPERIMENTALS:**

Experimentals can be covered exclusively with **ORATEX® UL 600** or **ORATEX® 6000**. Therefore only the builder is responsible, we will help you with guidance, support (workshop participation) and technical support if calculations are needed.

CAUTION: Minor Repairs in accordance with the AML in our Application Manual are allowed to perform – also on not **ORATEX®** covered aircraft in accordance with our Application Manual.

The **Request Form**, the **Approved Model List**, the **Application Formular for Microlights** as well as the **Application Manual** can be downloaded from our website www.lanitz-aviation.com at "Downloads".

For aircraft covered with **ORATEX®** ensure you have the latest Application Manual as it becomes part of the aircraft manuals relating to **ORATEX®** coverings.



All products from one provider - for a perfect finish!

Our covering products **EASYPLOT®**, **ORALINE®** and **ORATRIM®** are AVIATION CERTIFIED:

- free of PVC
- high gloss
- UV-proof
- highly dimensionally stable and still very light
- very durable, abrasion-proof
- extraordinary temperature resistant
- colour-matched to our other products
- totally fuel proof
- self-adhesive
- can be painted
- very durable

EASYPLOT®

CUTTING FILM

width: 20 cm, 30 cm, 38 cm, 60 cm

The cutting film made of UV-proof polyester for **highest standards!**



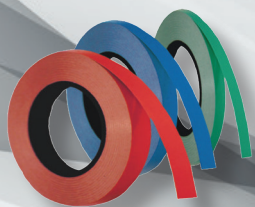
EASYPLOT® cutting films are the environmentally friendly alternative compared to PVC-products.
EASYPLOT® is approved for civil and military aircraft up to MACH 4.18.



ORALINE®

TRIM STRIPES

10 m roll in 1 mm - 20 mm width,
in steps of 1 mm

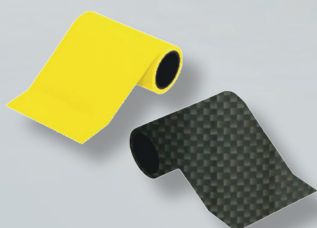


For **markings and fine details.**
Give your aircraft a personal touch!

ORATRIM®

TRIM STRIPES

2 m, 5 m or 25 m roll available in
9,5 cm or 12 cm widths



For **sporty and creative designs** without extensive painting!

EASYPLOT® UVK film colour	width: 20 cm	width: 30 cm	width: 38 cm	width: 60 cm	EASYPLOT® UVK film colour	width: 20 cm	width: 30 cm	width: 38 cm	width: 60 cm
	for SV-8	for SV-12	for SV-15	for GS-24		for SV-8	for SV-12	for SV-15	for GS-24
	ref. no.	ref. no.	ref. no.	ref. no.		ref. no.	ref. no.	ref. no.	ref. no.
standard colours					pearl colours				
white	152-010	153-010	154-010	150-010	pearl white	152-016	153-016	154-016	150-016
grey	152-011	153-011	154-011	150-011	pearl red	152-027	153-027	154-027	150-027
cream	152-012	153-012	154-012	150-012	pearl yellow	152-036	153-036	154-036	150-036
turquoise	152-017	153-017	154-017	150-017	pearl golden yellow	152-037	153-037	154-037	150-037
olive drab	152-018	153-018	154-018	150-018	pearl green	152-047	153-047	154-047	150-047
corsair blue	152-019	153-019	154-019	150-019	pearl purple	152-056	153-056	154-056	150-056
red	152-020	153-020	154-020	150-020	pearl blue	152-057	153-057	154-057	150-057
bright red	152-022	153-022	154-022	150-022	pearl charcoal	152-077	153-077	154-077	150-077
ferri red	152-023	153-023	154-023	150-023	fluorescent colours				
pink	152-024	153-024	154-024	150-024	fluor. magenta	152-013	153-013	154-013	150-013
cub yellow	152-030	153-030	154-030	150-030	fluor. neon-pink	152-014	153-014	154-014	150-014
golden yellow	152-032	153-032	154-032	150-032	fluor. Violet	152-015	153-015	154-015	150-015
cadmium yellow	152-033	153-033	154-033	150-033	fluor. Red	152-021	153-021	154-021	150-021
green	152-040	153-040	154-040	150-040	fluor. pink	152-025	153-025	154-025	150-025
light green	152-042	153-042	154-042	150-042	fluor. power pink	152-028	153-028	154-028	150-028
may green	152-043	153-043	154-043	150-043	fluor. Yellow	152-031	153-031	154-031	150-031
blue	152-050	153-050	154-050	150-050	fluor. Green	152-041	153-041	154-041	150-041
dark blue	152-052	153-052	154-052	150-052	fluor. blue	152-051	153-051	154-051	150-051
sky blue	152-053	153-053	154-053	150-053	fluor. orange	152-064	153-064	154-064	150-064
violet	152-054	153-054	154-054	150-054	fluor. signal orange	152-065	153-065	154-065	150-065
purple	152-055	153-055	154-055	150-055	scale colours - 100% opaque				
orange	152-060	153-060	154-060	150-060	scale white	162-010	163-010	164-010	160-010
black	152-071	153-071	154-071	150-071	scale red	162-020	163-020	164-020	160-020
design-black	152-072	153-072	154-072	150-072	scale bright red	162-022	163-022	164-022	160-022
brown	152-081	153-081	154-081	150-081	scale ferri red	162-023	163-023	164-023	160-023
silver	152-091	153-091	154-091	150-091	scale cub yellow	162-030	163-030	164-030	160-030
gold	152-092	153-092	154-092	150-092	scale golden yellow	162-032	163-032	164-032	160-032
bordeaux red	152-120	153-120	154-120	150-120	scale yellow	162-033	163-033	164-033	160-033
transparent	182-000	183-000	184-000	180-000					

EASYPLOT® FUN 4 UVK film		12,5 mm squares width: 20 cm for SV-8	12,5 mm squares width: 30 cm for SV-12	12,5 mm squares width: 38 cm for SV-15
background colour	of design	ref. no.	ref. no.	ref. no.
yellow	red	197-033-023	198-033-023	199-033-023
white	red	197-010-023	198-010-023	199-010-023
white	dark blue	197-010-052	198-010-052	199-010-052
white	black	197-010-071	198-010-071	199-010-071
turquoise	black	197-017-071	198-017-071	199-017-071
red	black	197-023-071	198-023-071	199-023-071
yellow	black	197-033-071	198-033-071	199-033-071
silver	black	197-091-071	198-091-071	199-091-071
pearl white	black	197-016-071	198-016-071	199-016-071
pearl red	black	197-027-071	198-027-071	199-027-071
pearl yellow	black	197-036-071	198-036-071	199-036-071
pearl golden yellow	black	197-037-071	198-037-071	199-037-071
pearl green	black	197-047-071	198-047-071	199-047-071
pearl purple	black	197-056-071	198-056-071	199-056-071
pearl blue	black	197-057-071	198-057-071	199-057-071
pearl charcoal	black	197-077-071	198-077-071	199-077-071

EASYPLOT® FUN 5 + 5 + 6 UVK film		FUN 5 26 mm squares width: 60 cm for GS-24	FUN 5 52 mm squares width: 60 cm for GS-24	FUN 6 104 mm squares width: 60 cm for GS-24
background colour	of design	ref. no.	ref. no.	ref. no.
white	red	187-010-023	188-010-023	189-010-023
yellow	red	187-033-023	188-033-023	189-033-023
white	dark blue	187-010-052	188-010-052	189-010-052
white	black	187-010-071	188-010-071	189-010-071
red	black	187-023-071	188-023-071	189-023-071
yellow	black	187-033-071	188-033-071	189-033-071
silver	black	187-091-071	188-091-071	189-091-071
pearl white	black	187-016-071		
pearl red	black	187-027-071		
pearl yellow	black	187-036-071		
pearl golden yellow	black	187-037-071		
pearl green	black	187-047-071		
pearl purple	black	187-056-071		
pearl blue	black	187-057-071		
pearl charcoal	black	187-077-071		

ORATRIM® TRIM STRIPES

ORATRIM® is available in all **EASYPLOT®**-colours and in 3 different lengths (2 m, 5 m, 25 m) as well as in 2 different widths (9.5 cm, 12 cm):
e.g. **27**-classification, colour (e.g. **023** for ferried), length (e.g. **002** for 2 m), **GA** (General Aviation): **27-023-002-GA**

ORALINE® TRIM STRIPES, 10 m - roll

ORALINE® is also available in all **EASYPLOT®**-colours from 1 mm to 20 mm, in steps of 1 mm, special sizes are available on request: e.g. **26**-classification, colour (e.g. **053** for sky blue), width (e.g. **012** for 12 mm) **GA** (General Aviation): **26-053-012-GA**

ORACOLOR® 2-K-paint for General Aviation

- highly concentrated
- extremely durable against mechanical impact and UV
- fuel-proof
- identical in colour - combinable with **EASYPLOT®**, **ORATRIM®**, **ORALINE®**, **ORATEX® UL 600** and **ORATEX® 6000**

ORACOLOR® 2-K-ELASTIC PAINT for painting fabric covering, wood and metal
- permanently flexible WITHOUT the use of plasticizers!



The **ORACOLOR® 2-K-ELASTIC PAINT** for General Aviation was developed for painting fabric coverings, wood and metal. The paint is permanently flexible, WITHOUT the need of plasticizers, due to its special formulation. Cracks which occur with conventional paints, especially on fabrics, do not happen with **ORACOLOR® 2-K-ELASTIC PAINT**. Depending on the choice of hardener the paint can be brushed or sprayed.

ORACOLOR® SPECIAL THINNER



This special thinner is used to adjust the viscosity of **ORACOLOR®** paint. You can add up to 40 % thinner to the paint, depending on the spray gun / air brush system used. Especially in colder or warmer temperatures it is necessary for an optimal coverage of the paint to be adjusted in viscosity. It can be also used to clean brushes, air guns and tools. If a partially used tin of **ORACOLOR®** paint has thickened after a long storage time, you can readjust to viscosity by adding **ORACOLOR® SPECIAL THINNER** to your paint.

ORACOLOR® HARDENER FOR SPRAYING



For the application of **ORACOLOR®** 2-component paint with a spray gun / airbrush, **ORACOLOR® HARDENER FOR SPRAYING** is added to the paint. Mixing ratio (paint: hardener): 2:1.

ORACOLOR® HARDENER FOR BRUSHING



For the application of **ORACOLOR®** as a 2-component paint with a brush, **ORACOLOR® HARDENER FOR BRUSHING** is added to the paint. Mixing ratio (paint: hardener): 2:1.

ORACOLOR® FILLER



A flexible, single component product for the preparation of the surface - especially wood - to achieve a good finish.

ORACOLOR® WASH-PRIMER



ORACOLOR® Wash Primer is used to treat bare metal airframe components which would otherwise corrode or rust without a protective coating. This applies to both, steel and aluminium. When dealing with tubular structures with open-ends pay attention to the fact that the inside also needs to be protected as otherwise the moisture which condenses in the tube will lead to irreversible corrosion damage. The Washprimer can also be used as adhesive agent for painting metal surfaces with **ORACOLOR®** paint.

ORACOLOR® 2-K-MATT FINISHING AGENT



In order to get a matt-finished surface, simply add our MATT-FINISHING AGENT to the **ORACOLOR®** paint system. The level of matting can be adjusted by the dose added. PLEASE NOTE: The matt finishing agent slightly changes the colour of the paint. The addition of a matt-finishing agent requires a hardener in a 2:1 ratio. Depending on the spraying device, thinner up to 40 % can be added.

ADVISED ACCESSORY

ORACOLOR® 2-K-ELASTIC PAINT for painting fabric coverings, wood and metal

ORATEX® 6000 colours	
white	1113-010B
olive drab	1113-018B
corsair blue	1113-019B
fokkerred	1113-020B
cub yellow	1113-030B
sky blue	1113-053B
orange	1113-060B
black	1113-071B
silver	1113-091B

ORATEX® UL 600 colours	
white	1110-010B
antique - opaque	1110-012BD
antique - coloured transp.	1110-012BL
olive drab	1110-018B
corsair blue	1110-019B
fokkerred	1110-020B
cub yellow	1110-030B
sky blue	1110-053B
orange	1110-060B
black	1110-071B
silver	1110-091B

ORACOLOR® 1000 ml	
colour	ref. no.
transparent	1121-000B
white	1121-010B
grey	1121-011B
cream	1121-012B
turquoise	1121-017B
olive drab	1121-018B
corsair blue	1121-019B
red	1121-020B
bright red	1121-022B
ferri red	1121-023B
pink	1121-024B
cub yellow	1121-030B
golden yellow	1121-032B
cadmium yellow	1121-033B
green	1121-040B
bright green	1121-042B
may green	1121-043B
blue	1121-050B
dark blue	1121-052B
sky blue	1121-053B
violet	1121-054B
purple	1121-055B
pearl blue	1121-057B
orange	1121-060B
black	1121-071B
brown	1121-081B
silver	1121-091B
bordeaux red	1121-120B

ORACOLOR® 1600 ml	
colour	ref. no.
Fluorescent	
magenta fluoresz.	1121-013B
neon-pink fluoresz.	1121-014B
violet fluoresz.	1121-015B
red fluoresz.	1121-021B
pink fluoresz.	1121-025B
power pink	1121-028B
yellow fluoresz.	1121-031B
green fluoresz.	1121-041B
blue fluoresz.	1121-051B
orange fluoresz.	1121-064B
signal orange fluoresz.	1121-065B
UV-protection paint - 1000 ml	1121-001B

ORACOLOR® 1000 ml	
colour	ref. no.
Scale - 100 % opaque	
scale white	1122-010B
scale red	1122-020B
scale bright red	1122-022B
scale ferri red	1122-023B
scale cub yellow	1122-030B
scale golden yellow	1122-032B
scale yellow	1122-033B

Also available in 100 ml bottling!

ORACOLOR® SPECIAL THINNER	100 ml	100-996	ORACOLOR® WASH-PRIMER	100 ml	0984
	1000 ml	1100-996		500 ml	0983
ORACOLOR® HARDENER FOR SPRAYING	50 ml	100-997	SPECIAL REMOVER FOR ORATEX® DISPERSION HOTMELT ADHESIVE	1000 ml	0985
	500 ml	1100-997		250 ml	0957
ORACOLOR® HARDENER FOR BRUSHING	50 ml	100-998	ORATEX® CLEANER	500 ml	0958
	500 ml	1100-998		1000 ml	0959
ORACOLOR® MATT-FINISHING AGENT	50 ml	100-995		500 ml	08200
	500 ml	1100-995		1000 ml	08210
ORACOLOR® FILLER	100 ml	100-999			
	1000 ml	1100-999			

NECESSARY TOOLS & ACCESSORIES



STEINEL HEAT GUN HG 2320 E

with case and much equipment (ref. no.: 08465) / without case and equipment (item number: 08480)

Perfect handling and real fun: 2300-watt brushless motor, rated for 1.000 hours of operation. Digital temperature adjustment by joystick. LCD display showing temperature in 10 °C steps, includes heat build-up warning function and residual-heat indicator. The optimized weight balance and ergonomically shaped handle with soft inlay permit fatiguefree work. Non-slip standing surface and hanger. To ensure a reliable work process, the LOC function can be used to lock all settings on the tool. It is supplied in a case complete with 50 mm surface nozzle, reflector nozzle, 9 mm reduction nozzle and shrink tubings.



STEINEL HEAT GUN HL 2020 E

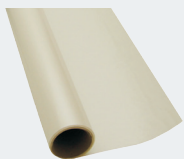
with case incl. reduction nozzle (ref. no.: 08470)

For passionate DIY-men. At expert level. The HL 2020 E heat gun is extremely robust, promising to last a good 20% longer than its predecessor. Hot air adjustable in 3 steps (150/ 150 -300/ 300 - 500 l/min). Professional extras: the residual heat indicator warns the user that the delivery nozzle is still hot and can cause burns even long after the tool has been unplugged. And the joystick permits intuitive operation and use. The current working temperature and airflow rate is indicated on the LCD display which is easy to read at any light level. The tool immediately responds to heat build-up by indicating a warning triangle on the display.



ORATEX® PROTECTION WAX, 450 ml (ref. no.: 08240)

To protect against contamination and used for an easier cleaning as well as for maximum colour protection. Shake well before use. Using our APPLICATION PADS (ref. no.: 08452) or with a cotton cloth, the wax has to be incorporated thoroughly into the fabric followed by a polishing with a micro fibre cloth.



SILICONISED RELEASE PAPER, 2 m (ref. no.: 12-100-002), 5 m (ref. no.: 12-100-005)

To prevent the fabric from receiving iron marks while covering, the SILICONISED RELEASE PAPER is to be placed with the glossy side to the fabric while ironing. The iron should only slide on the dull side of the SILICONISED RELEASE PAPER and NEVER directly on the fabric as there will be the danger of the iron shoe to create marks on the fabric.



SPECIAL REMOVER FOR **ORATEX**® DISPERSION HOTMELT ADHESIVE, 250 ml (ref. no.: 0957), 500 ml (ref. no.: 0958), 1000 ml (ref. no.: 0959)

The **ORATEX**® Adhesive Remover serves to remove fresh **ORATEX**® Dispersion Hotmelt Adhesive remainders. You soak an uncoloured (white) piece of natural fibre cloth (e.g. cotton) with the adhesive remover. With this wet piece of cloth, you slightly wipe two to three times over the surface to remove the remainders of the adhesive.



PRESS ROLL (ref. no.: 08150)

The press roll is used to perform work under thermal loads. It is used especially when ironing-on and pressing the covering on difficult areas such as tips. The press roll can be used with high pressure without marking.



ORATEX® T14 IRON (ref. no.: 08420)

- variable adjustable temperature control from 90 °C to 160 °C with digital display
- built-in microprocessor controls temperature fluctuations
- strong die-cast aluminum plate for optimal heat storage
- voltage: 230 V-power: 1200 W-weight: approx. 0.9 kg



DEGREASER FOR **ORATEX**® 250 ml (ref. no.: 08245), 500 ml (item number: 08246), 1000 ml (ref. no.: 0824)

To clean surfaces of overlaps, before ironing-on pinked-edge tapes, before painting and before sanding.



PINKING SHEARS (ref. no.: 0906)

The pinking shears are used to make easily DIY pinked edge tapes and for „good-looking“ cutting edges.



ORACOLOR® PAINT BRUSH, 40 mm / 60 mm / 80 mm (ref. no.: 08152 / 08153 / 08154)

This special paint brush gives you the opportunity to achieve an excellent paint job. The paint layer you will get is homogeneous and without brush marks. For a professional finishing result you will not have to be an expert. Due to the hardener in the **ORACOLOR**® system the brush should be used only once.



SPECIAL BRUSH FOR **ORATEX**® DISPERSION HOTMELT ADHESIVE 80 mm / 38 mm / 25 mm (ref. no.: 08424 / 08425 / 08426)

In order to apply the **ORATEX**® dispersion hotmelt adhesive and **ORACOVER**® foam adhesive properly, you have to use this special brush. If you want to use the brush again, you need to put it in cold water IMMEDIATELY after using and clean it properly, otherwise it will be useless as the brush hairs will stick together.

ADVISED TOOLS & ACCESSORIES



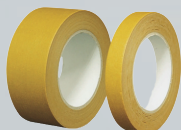
RIB LACING CORD FOR **ORATEX**® (ref. no.: 08140)

Lacing is also required wherever the contact of fabric with the structure is without pressure. For example: on even planes of a tube structure.



PROTECTIVE CLOTH FOR IRONING, 10 items (ref. no.: 08460)

The iron is placed in the centre of the protective cloth, all 4 sides are being folded up towards the handle and fixed by means of a self-adhesive tape. It protects the ironed surfaces and avoids scratches and marks caused by the iron.



FIXING TAPE FOR **ORATEX**®, length: 50 m width: 19 mm (ref. no.: 08258), width: 50 mm (ref. no.: 08259)

The Fixing Tape is used whenever **ORATEX**® needs to be fixed and is easily removable.



ORATEX® MASKING TAPE, length: 66 m, width: 10 mm (ref. no.: 08230-010), width: 30 mm (ref. no.: 08230-030), width: 50 mm (ref. no.: 08230-050)

The well-known problem: when painting fabric, especially when using a brush or a paint roller, the paint runs into the depressions beneath the masking. After removing the masking tape one is annoyed at the uneven edges. But not with the masking tape for **ORATEX®** "The Red One". Stick on, press on, paint or roll or spray. Just let the paint dry and crosslink after the application of the last layer of paint. After removing the masking tape a light adhesive film will remain. However, this adhesive film is harmless and can be removed with the **ORATEX®** CLEANER after the paint is completely dry.



ORACOLOR® 2K-PU-FILLER, 300 g (ref. no.: 08445), colour: white

The 2K-PU-Filler comes with great filling properties, dries fast, DOES NOT SHRINK, is temperature-resistant, dries fast and can be sanded easily. It has been developed to be the base for the **ORACOLOR®** paint system. The 2K-PU-Filler is supplied with the correct hardener. Unlike basic fillers areas filled with **ORACOLOR®** 2K-PU-Filler can be immediately covered with **ORATEX®**.



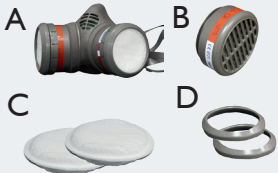
STEINEL TEMPERATURE SCANNER HL Scan (ref. no.: 08475)

Total temperature control and never again melting holes in the covering. HL Scan measures the temperature at the workpiece surface while working on it with the hot air tool. An acoustic signal sounds as soon as the heat either exceeds or falls below the ideal temperature. The display also shows whether the workpiece surface is too hot or too cold. Red means „too hot“, green is „ideal temperature“ and blue means „too cold“. The warning tolerance range can be selected to suit individual needs. If chosen, the visual and acoustic warning can be deactivated.



ORATEX® CLEANER CONCENTRATE, 1000 ml (ref. no.: 08210)
ORATEX® CLEANER READY FOR USE, 500 ml (ref. no.: 08200)

The cleaning agent of professionals for covered aircraft. The **ORATEX®** CLEANER removes grease, oil, wax, soot and resin easily. The concentrate needs to be diluted to 1:3 or 1:10 depending on the soiling. The **ORATEX®** CLEANER is used to clean dirty surfaces like plastic and textile surfaces. Spray the CLEANER from 20 cm distance. Allow it to work for ca. 1 minute. Use an absorbent cloth crosswise to soak up the dissolved dirt and rinse with clear water afterwards. Do not let dry. Afterwards, use clear water for washing down. Very good biodegradable. Notice: Do not use in direct solar irradiation or on hot surfaces. Only use on water- and alkali-resistant surfaces.



RESPIRATOR MASK WITH FILTER AND BOX (ref. no.: 08249)

Applying organic solvents a respirator which is equipped with filters against organic solvent is part of your personal protection equipment. Organic solvents can be found in **ORATEX®** DEGREASER, **ORATEX®** ADHESIVE REMOVER, **ORACOLOR®** paint, hardeners, thinners and fillers, base coats, wash-primers etc. Think of your personal safety and only work in well ventilated rooms. According to national safety regulations the use of a respirator mask is obligatory, protects your health and assures your safety when you handle the above mentioned chemicals.

Box content:

- A) 1 x mask size M
- B) 2 x filter for solvent A2 (available as a replacement part, ref. no.: 08251)
- C) 2 x dust particle filter P2 D (available as a replacement part, ref. no.: 08250)
- D) 2 x dust particle filter adapter (available as a replacement part, ref. no.: 08252)



WORKING GLOVES, size 8 / 9 / 10 (ref. no.: 08428 / 08429 / 08430)

Working gloves assist you to hold the covering while stretching. Thanks to the knobs on the inside of the palm the covering can be held and stretched easily over the area to be covered, to have an easy ironing job. We recommend the use of the working gloves for an optimal handling of the covering. Additionally, they protect your hands from heat, especially when covering the tips with a heat gun.



CHEMICAL GLOVES, size 7,5 M / size 9,5 XL (ref. no.: 08431 / 08432)

Chemical gloves are part of the personal protection equipment and they serve your safety and health. The application of the gloves is obligatory as soon as you have to work with organic solvents, adhesives, paint, hardeners, thinners, fillers, primers, etc.



ABRASIVE DISC FOR REMOVING HARDENED ORATEX® DISPERSION HOTMELT ADHESIVE (ref. no.: 08490), **MOUNTING PLATE FOR ABRASIVE DISC** (ref. no.: 08495)

This abrasive disc and the corresponding adapter are the only tools approved by us for the effective removal of hardened **ORATEX®** DISPERSION HOTMELT ADHESIVE. It can be used for surfaces made of wood, metal, fiberglass and carbon fibre. It also fits on commercial and SPEED REGULATED angle grinders.



TOOL FOR STRENGTH TEST (ref. no.: 08485)

This tool is used for the strength and aging test of **ORATEX®** on your aircraft.

SHERWOOD RANGER DS

True Flying



covered with
ORATEX® UL 600



The heart under the cowling is the UL-Power engine UL260i with a double injection pump and Fadec. As a standard feature E-10 fuel can be used for the Sherwood Ranger DS. The external compactness with spacious interior of the Sherwood is very impressive. It is also „roadworthy“. Thanks to its folding wings the Sherwood can be rigged for flight within a couple of minutes by one person only. It can easily be transported with modern aircraft trailers for instance with the Speedstar Deluxe. This unique feature eliminates expensive hangarage costs as well as eliminating damage caused while being hangared. The Sherwood Ranger is an incredible Short Field performer easily operated from grass strips and un-prepared airfields of 300mtrs and smaller. The Sherwood Ranger DS is available with an airworthiness certification by the German DAEC as an ultralight aircraft.

Model designation: three-axis microlight biplane
Wingspan: 7.92 m
Length: 6.10 m
Wing area: 15.06 m²
Net weight, incl. basic instruments & ballistic rescue system: 265 kg
MTOW: 472.5 kg
Engine: UL 260i

Performance: 97 PS/ 71.34 kW
Tank capacity: 41 l
Take off distance: 50 m
Climb rate: 1200 ft/m (6 m/s)
Cruising speed: 140 km/h
Vne: 160 km/h
Max flying range: 320 km
Rescue system: Magnum 450

ready to fly as microlight, basic version(+4G-2G)

ref. no: 08019

Construction kit as microlight, basic airframe(+4G-2G)

ref. no.: 08025

Construction kit as do-it-yourself construction and D-E ... Approval (construction supervision by OUV), basic airframe kit (+4G - 2G)

ref. no.: 08300

Sherwood Ranger XP AERO (fully acrobatic), construction kit as do-it-yourself construction,
Basic airframe kit (+6G -4G)

ref. no.: 08310

For detailed available features and options see our homepage.



A DIVISION OF
LANITZ-PRENA FOLIEN FACTORY GmbH

Am Ritterschlösschen 20
04179 Leipzig

Fon: +49 341/442305-0
Fax +49 341/442305-99

E-Mail: info@lanitz-aviation.com
Onlineshop: www.lanitz-aviation.com